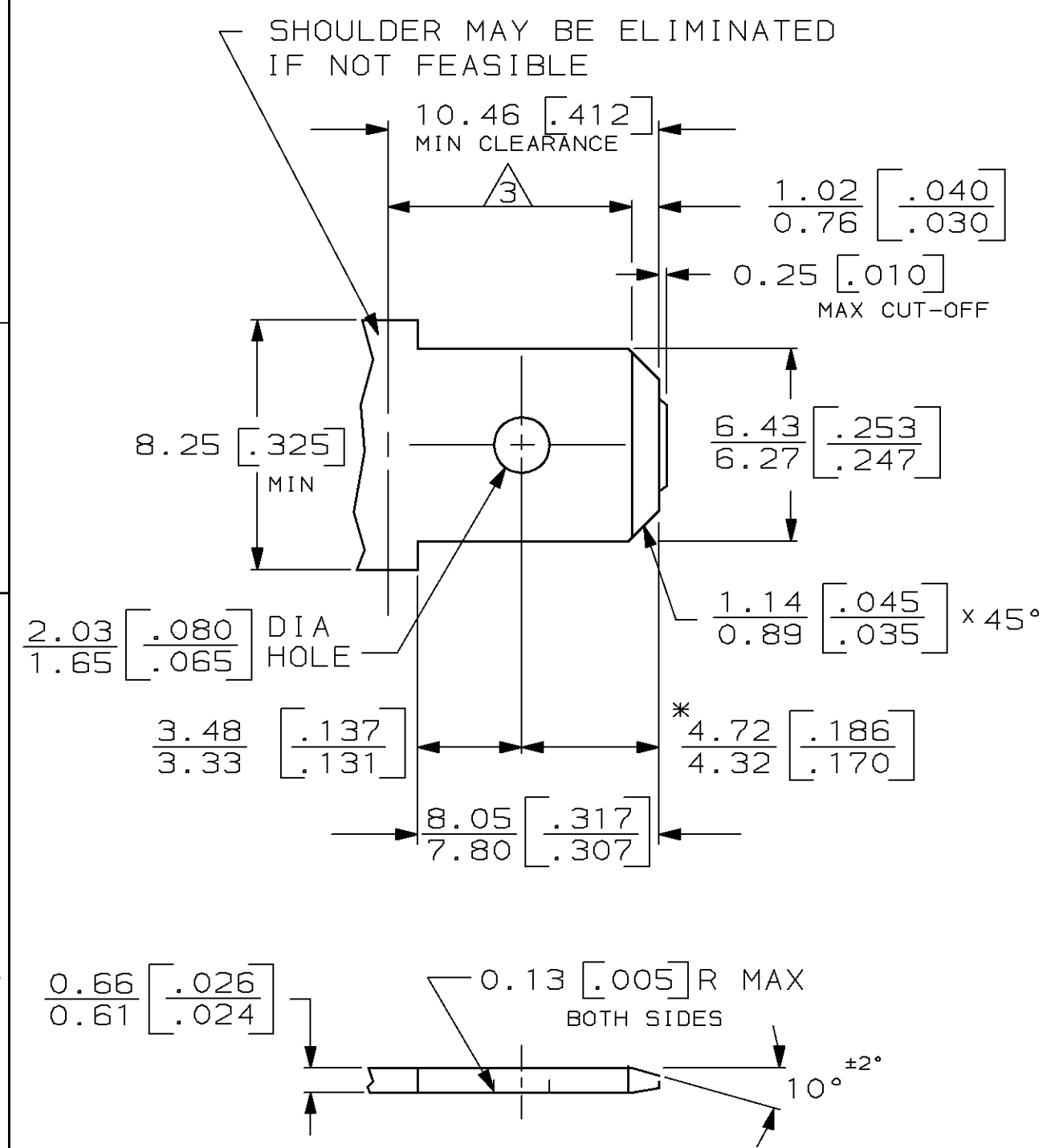
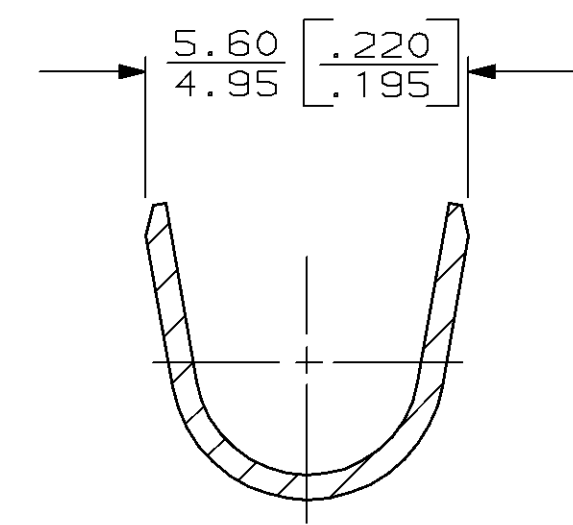
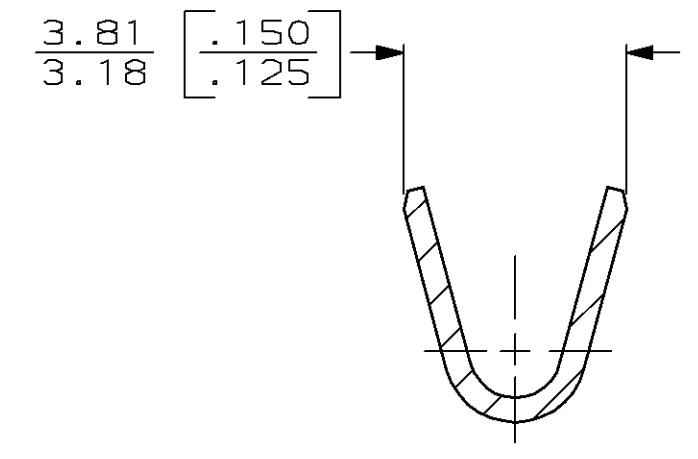
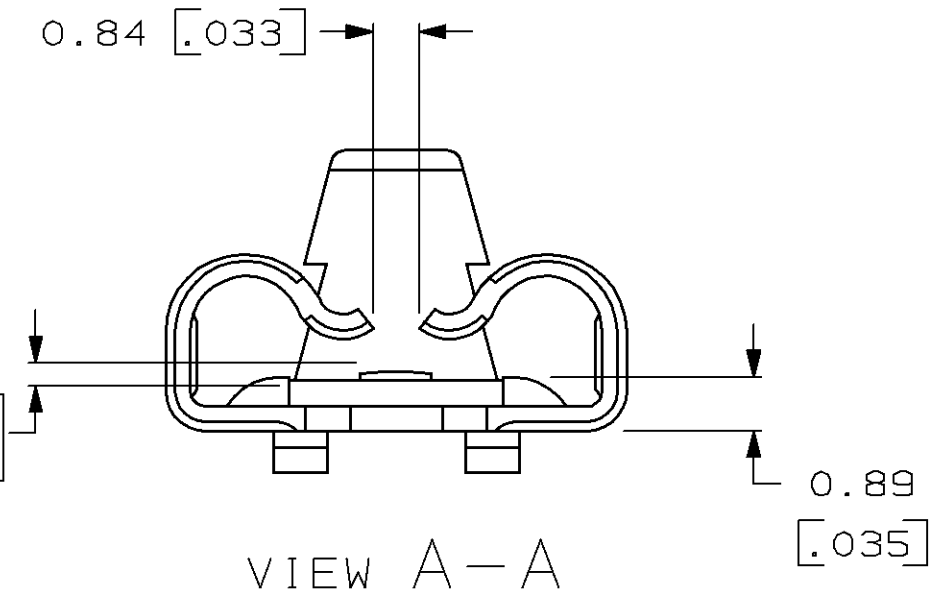
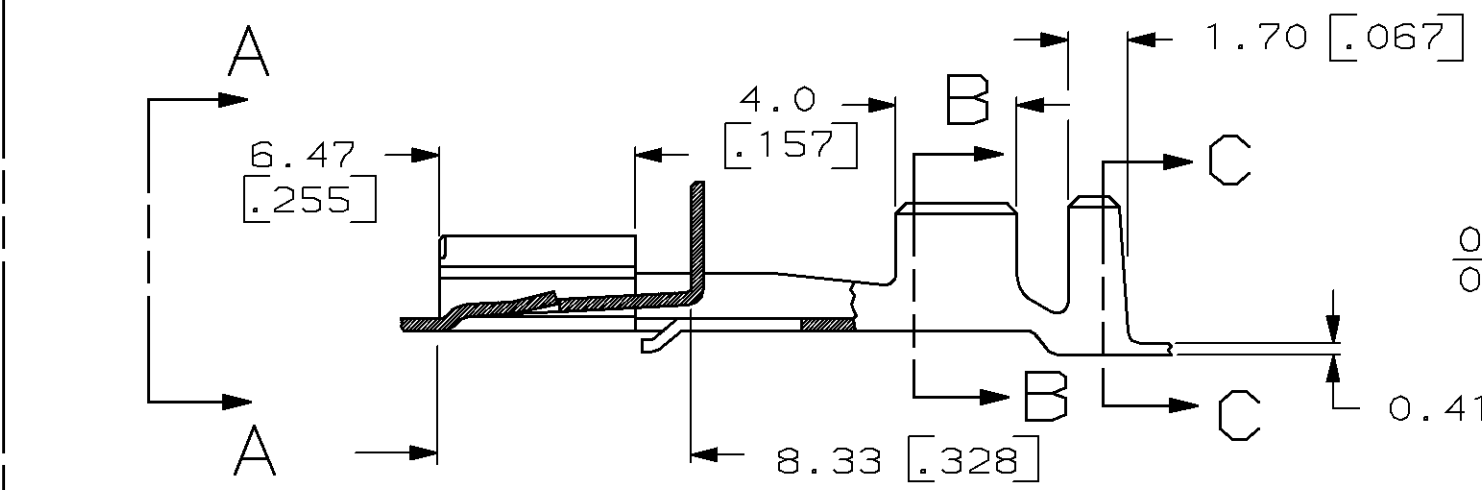
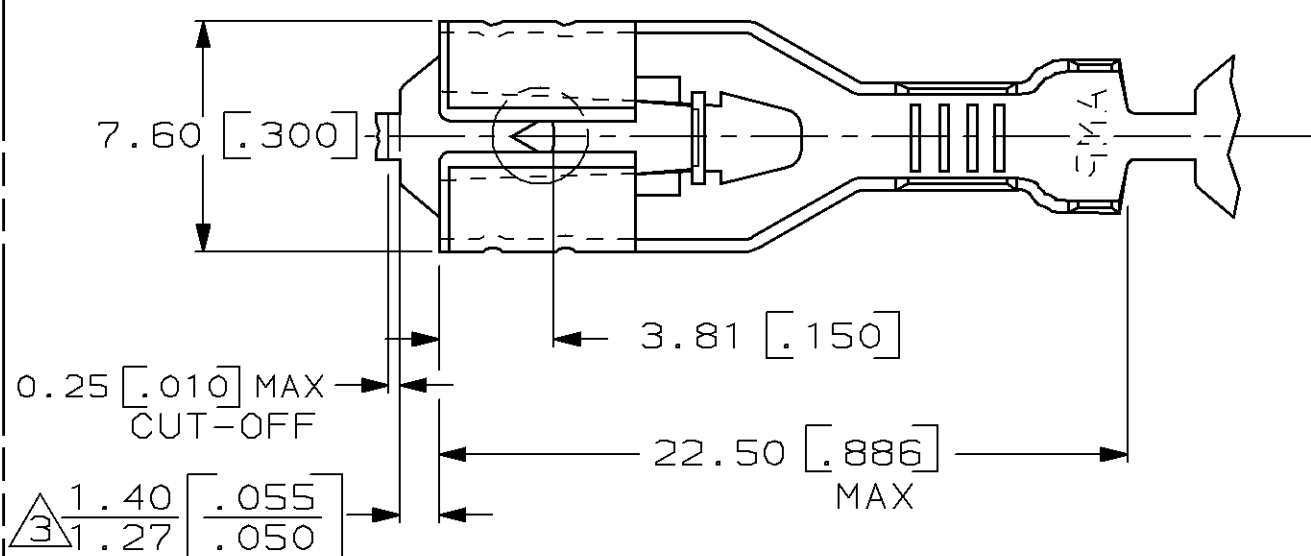


LOC		DIST		ZONE		LTR		REVISIONS		DATE	APPD
AF	50	P	F			B		REV PER 061A-0252-98	8/24/98	JR/JG	

### SUGGESTED MATING TAB



- 1 - MATL: 1/2H BRASS OR NICKEL PL STEEL.
  - 2 - NO BURRS PERMISSIBLE AT HOLE.
  - 3 - MUST BE FLAT WITHIN 0.076 [.003] OVER THIS LENGTH.
  - 4 - TIN PLATING IS REQUIRED ON BRASS WHEN TERMINAL TEMP. IS OVER 225°F.
  - 5 - HOLE MUST BE SYMMETRICAL ABOUT TAB Q WITHIN 0.076 [.003]
- \* TO BE USED ONLY WHEN SHOULDER IS ELIMINATED.



2 CONTINUOUS STRIP ON REELS.

3 THE 1.40 [.055] / 1.27 [.050] DIMENSION MUST BE MAINTAINED BY THE APPLICATOR CUT-OFF TO ENSURE THE PROPER LOCKING FUNCTION OF THE RECEPTACLE.

TIN 0.002032 [.000080] MIN	2.29-3.94 [.090-.155] DIA	[#18-#14] AWG	63809-1
FINISH	INSULATION RANGE	WIRE SIZE	PART NO
DO NOT SCALE PRINT. UNLESS SPECIFIED DIMENSIONS IN mm [INCHES] TOLERANCES ON: 2 PLC DEC ± 0.25 [.010] 3 PLC DEC ± - ANGLES ± -	DR 9/27/94 JR RUTH CHK 9/27/94 MS FEHER APPD 9/27/94 J GILLESPIE	AMP Incorporated Harrisburg, PA 17105-3608	
MATERIAL	APPD 9/27/94 R REINER		
H06 BRASS	PRODUCT SPEC	RECEPTACLE, POSITIVE LOCK, 6.35 [.250] SERIES	
FINISH	APPLICATION SPEC	SIZE	CAGE CODE
SEE TABLE	114-2074	C	00779
	WEIGHT -	DRAWING NO	G=63809
		SCALE	5:1
		SHEET	1 OF 1

THIS DRAWING IS A CONTROLLED DOCUMENT FOR AMP INCORPORATED. IT IS SUBJECT TO CHANGE AND THE CONTROLLING ENGINEERING ORGANIZATION SHOULD BE CONTACTED FOR THE LATEST REVISION.